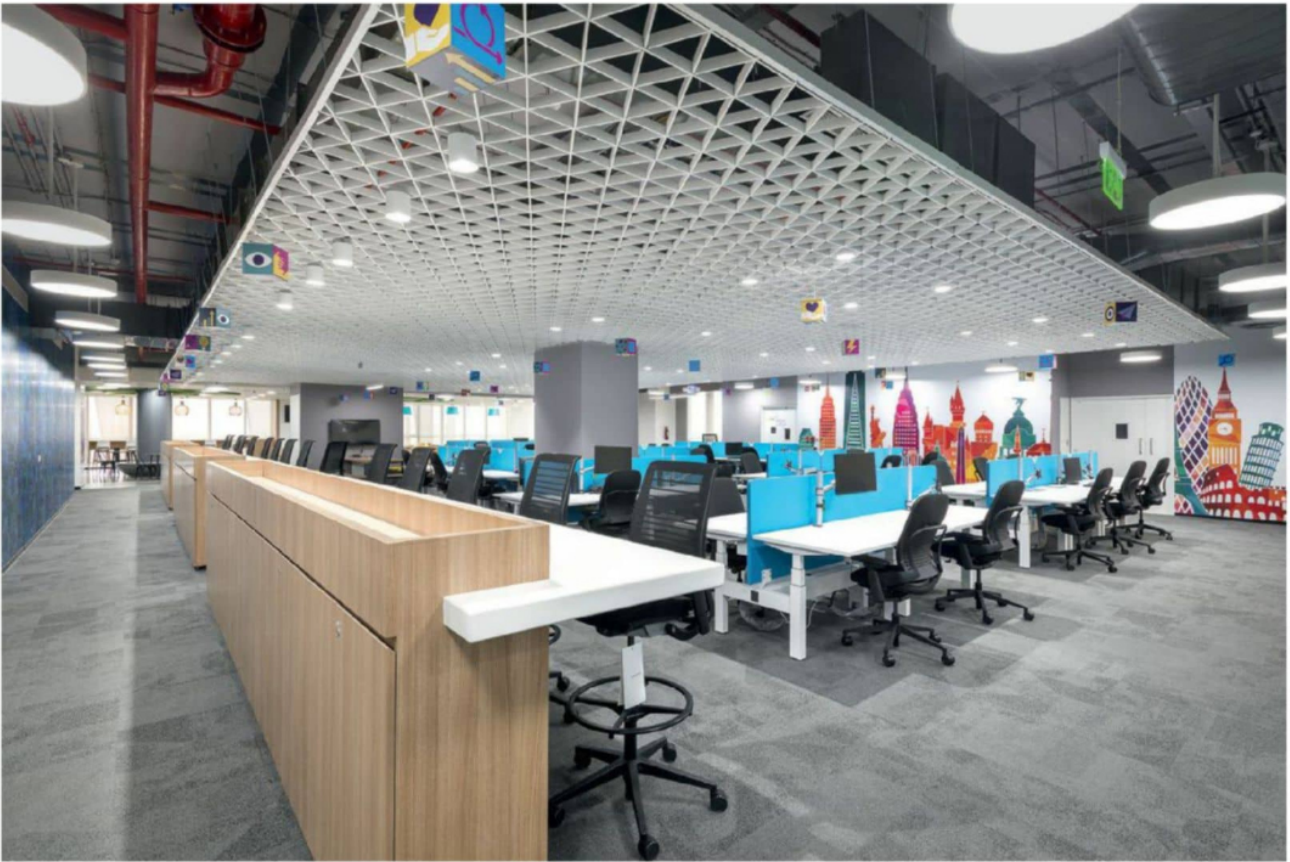


## Office Interiors



# A relaxed, collaborated working environment

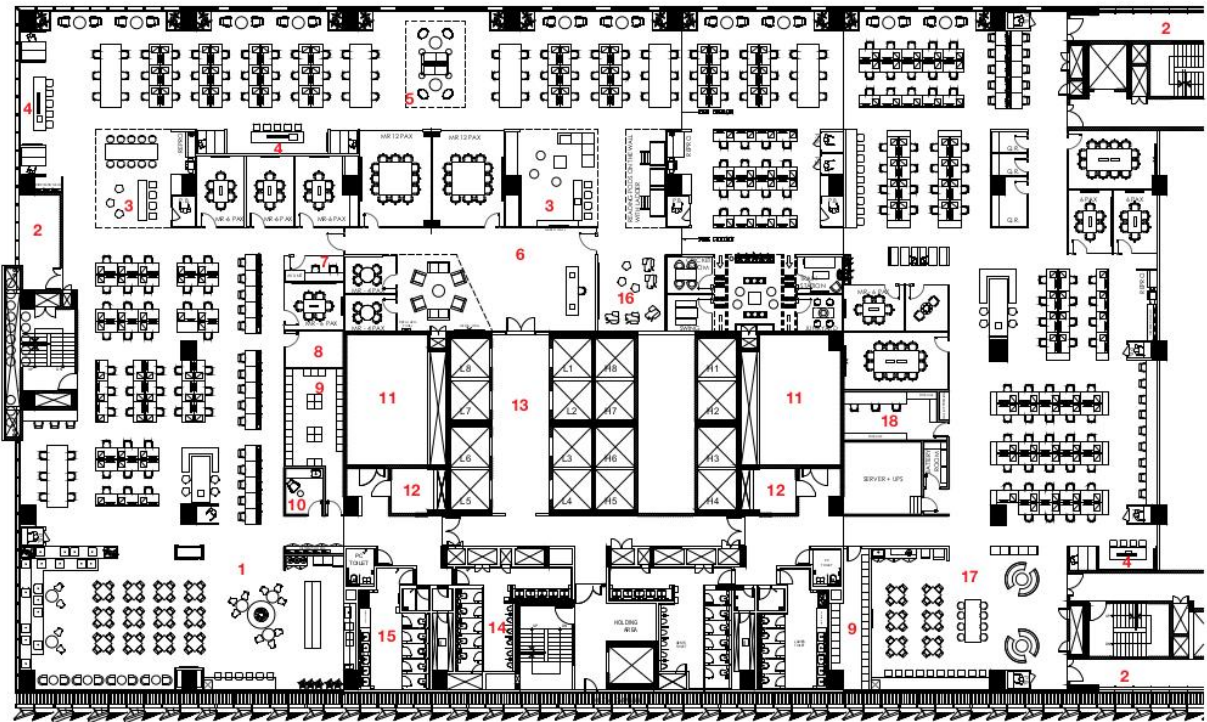
**Project:** Reckitt Benciser, Hyderabad

**Architects:** Geo Designs, Delhi

The sleek office space of Reckitt Benckiser in Hyderabad highlights the salient features of current design trends. Starting at the entrance, the reception and its signature wall are inspired by the brand identity of Reckitt Benckiser's corporate logo, amalgamating them with a huge moss wall, in order to bring freshness to the design. The workstations selected are

height-adjustable, focussing on ergonomics and employee comfort, while simultaneously showcasing flexibility in design.

Moreover, hot desks were set up in specific zones with a variation of carpets, to differentiate them from regular work zones. This enabled the creation of a break in the design, while earmarking a specific area for relaxed and



FLOOR PLAN

- |                     |                     |                     |
|---------------------|---------------------|---------------------|
| 1. CAFETERIA        | 7. SECURITY ROOM    | 13. LIFT LOBBY      |
| 2. BALCONY          | 8. STORE ROOM       | 14. MALE TOILET     |
| 3. COLLAB AREA      | 9. LOCKERS          | 15. FEMALE TOILET   |
| 4. INTERACTIVE ZONE | 10. MOTHER'S ROOM   | 16. INNOVATION ROOM |
| 5. LOUNGE           | 11. AHU             | 17. BREAKOUT        |
| 6. RECEPTION        | 12. ELECTRICAL ROOM | 18. IT ROOM         |





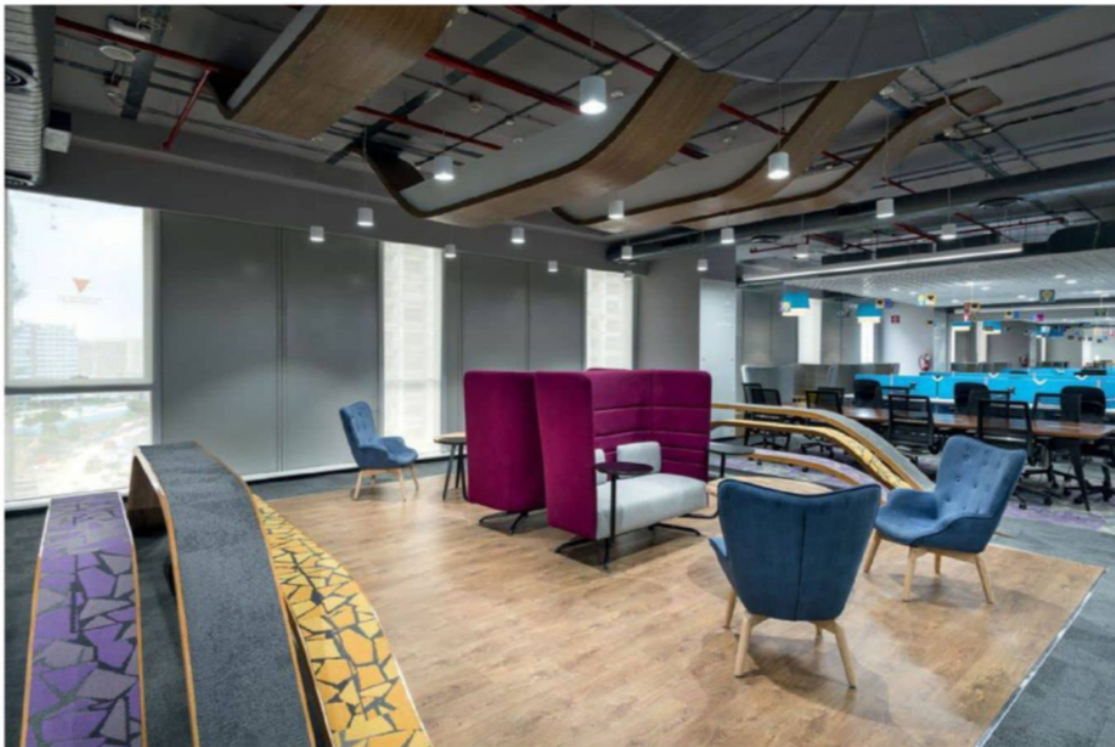
collaborative working. These collaborative zones are placed at regular distances from the work zones, and includes nook seating for private as well as one-on-one interactions.

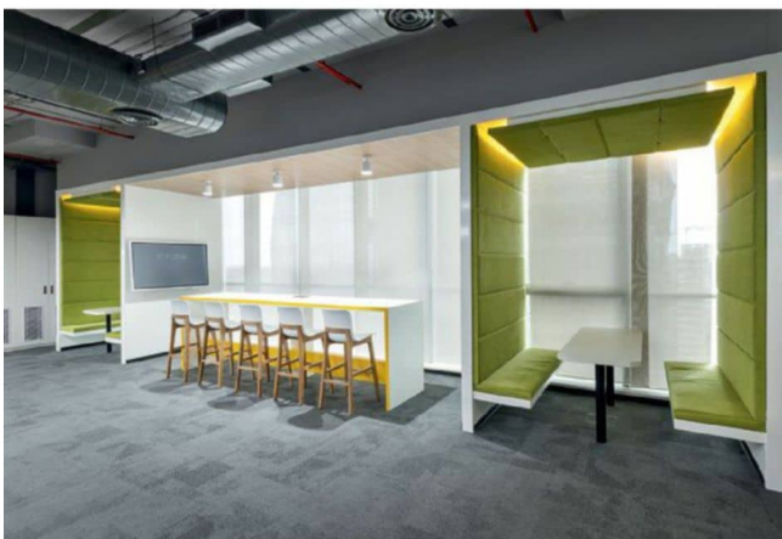
A cluster of theme-based meeting rooms were provided, with a central breakout lounge as focus. Each of them reflects its respective features with graphics and customised designs. The themes were carefully selected based on interactions with the employees at the office, to bring out the co-relation between

the people and the workplace. By following such a methodology, the following theme-based meeting rooms were created:

- Cricket Room • Swing Room
- Junkyard • Train Room

Furthermore, private booths with acoustical properties were placed throughout the office, for employees to engage in private calls without disturbing others around. Special reading pods were also placed to enhance stakeholder convenience, providing a casual seating for the





employees to relax or read. The lounge area was designed with a certain twist, too. Here, planters were suspended from the ceiling, along with uniquely-designed floor ramps incorporated with wooden flooring—the key features of this space. The space also had step seating for employees to sit in a casual atmosphere, interact and unwind. The theme-based cafeteria has a step seating incorporated, as well.

Any construction on the periphery was avoided to allow maximum natural light to flow

inside. Instead, soft casual seating is provided along the glazing for personal work and interactions amongst the stakeholders, while basking in natural sunlight. +

#### Factfile

**Contractors:** Cherry Hill Interiors Pvt Ltd

(Structural and Civil Interior)

**Built-up area:** 30,000 sq ft

**Cost of project:** INR 5.5 cr

**Year of completion:** 2019